



WebEye
A Eurowag Company

WEBEYE TELEMATICS REPORTS



CONTENTS

General information

Access of the Reports

Query a report, usage of the parameter bar

The view of report results

Customization of report table

Export of the report content



WebEye

A Eurowag Company

GENERAL INFORMATION



GENERAL INFORMATION

Through WebEye's new reporting interface, you can query the reports for your fleet via a web browser interface, and create real-time Excel and PDF exports.

What are the benefits of the service?

- The new interface provides easy to use functionalities and offers high performance.
- It is possible to query historical data about your vehicles, entire fleet, or drivers through a web interface.
- You can create Excel and PDF exports for any report.
- In each report, you can customize what data you need for work on a daily basis and save the spreadsheet settings to your own user profile.
- You can optionally email the report in a scheduled manner.





WebEye

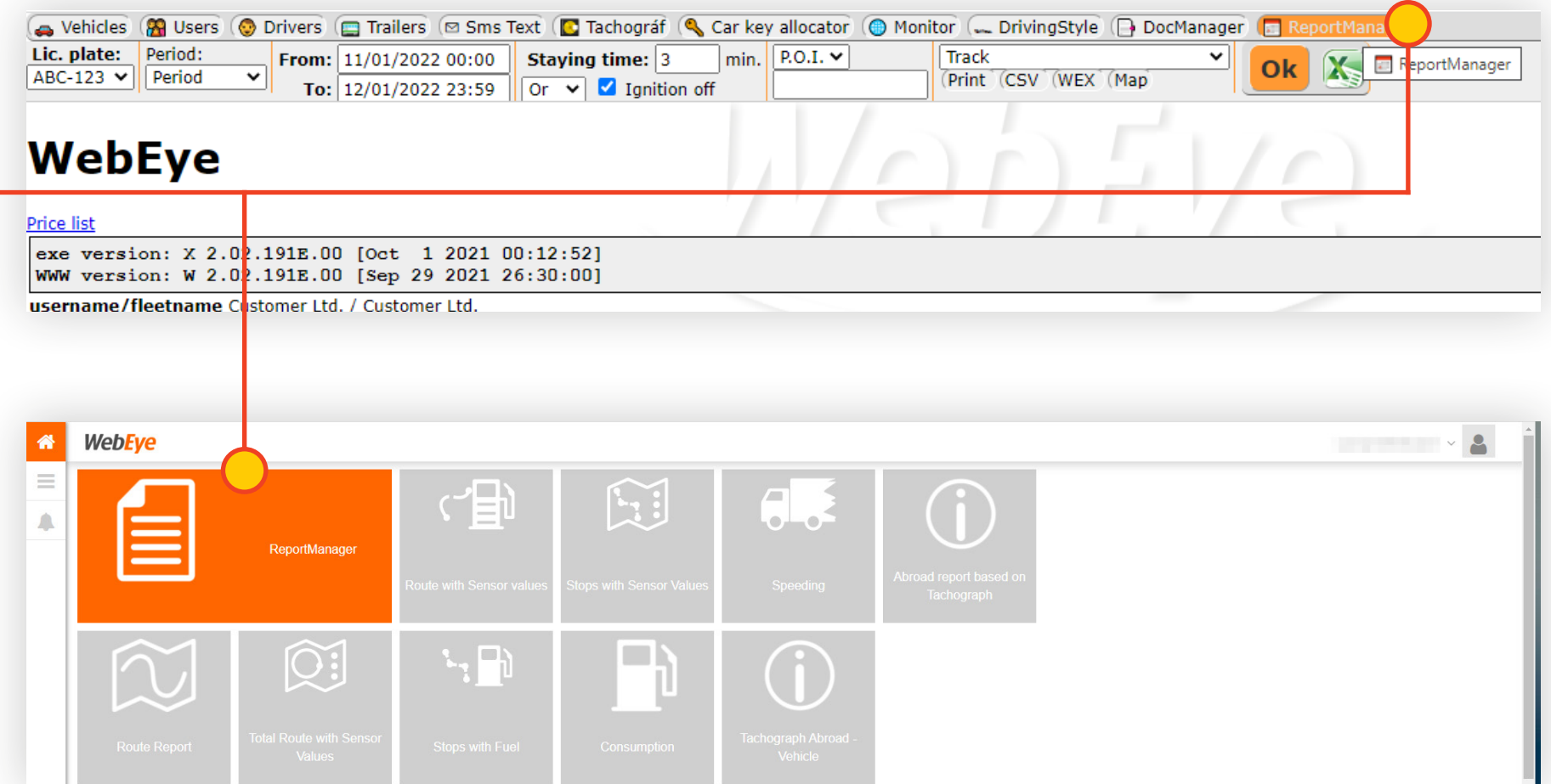
A Eurowag Company

ACCESS OF THE REPORTS

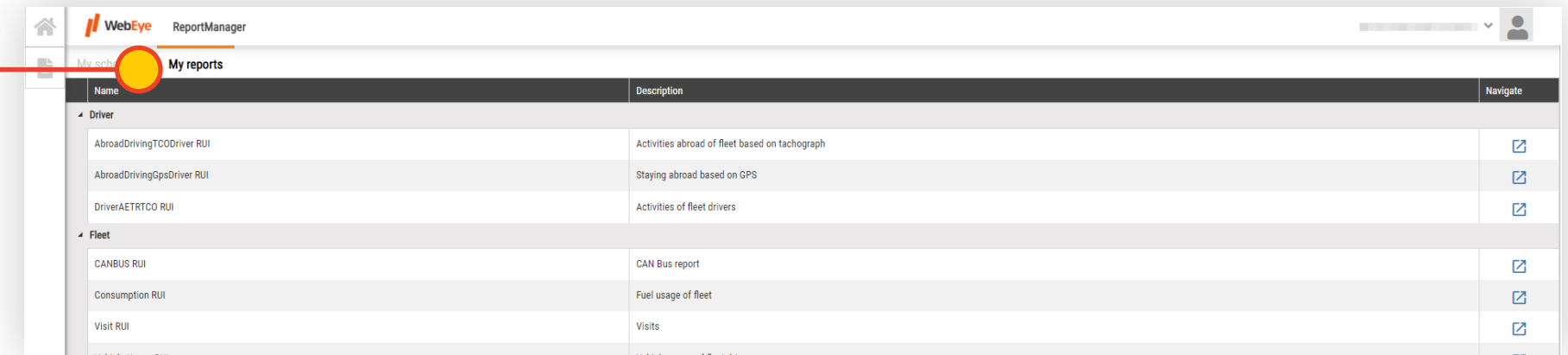


ACCESS OF THE REPORTS

You can navigate to reports through the Report Manager interface. You can access Report Manager using your login information and by logging in to the Webeye platform. The Report Manager interface may appear as follows, depending on the WebEye system you are using:



Under the My Reports tab, you can see all the reports available to you:

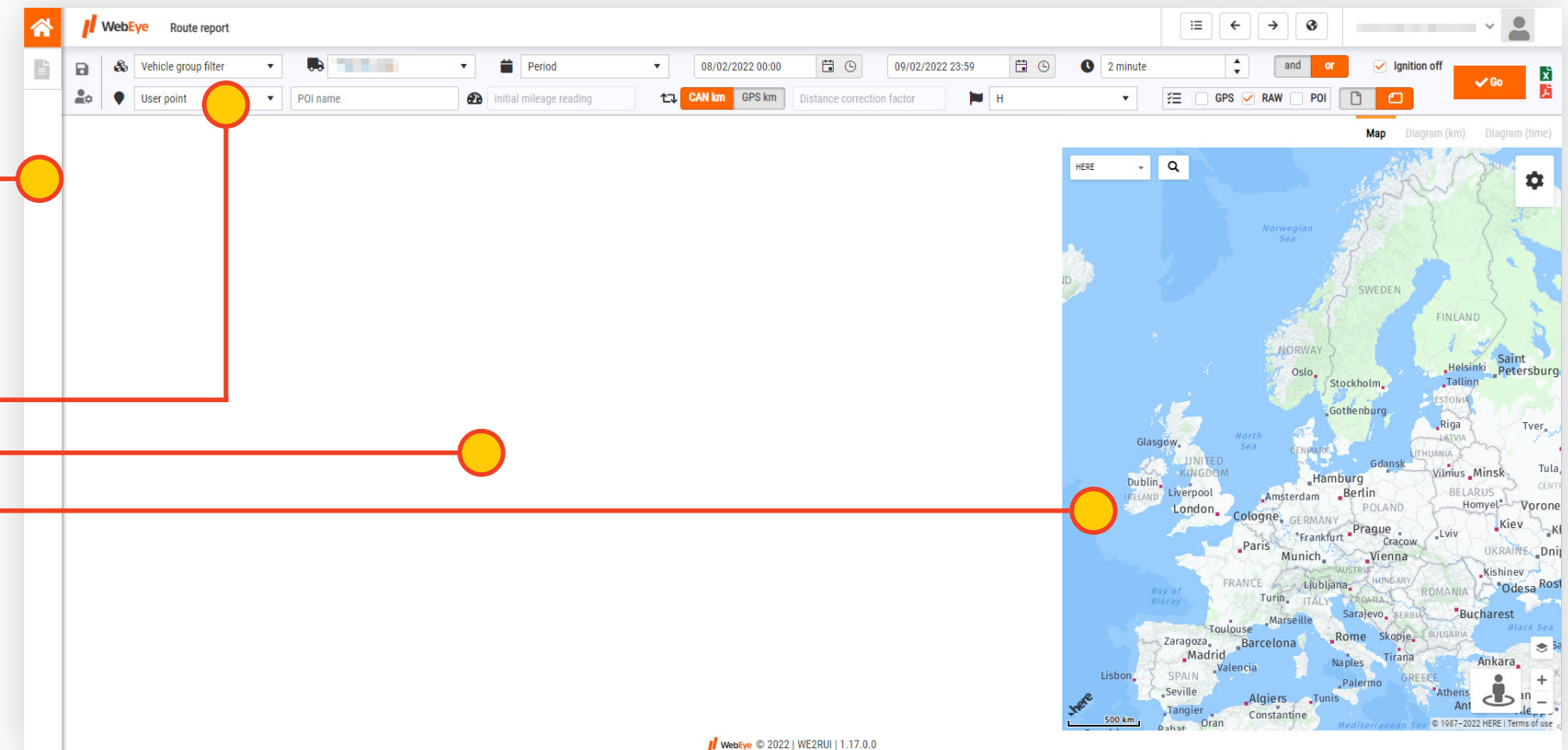


Name	Description	Navigate
Driver		
AbroadDrivingTCODriver RUI	Activities abroad of fleet based on tachograph	[icon]
AbroadDrivingGpsDriver RUI	Staying abroad based on GPS	[icon]
DriverAETRTO RUI	Activities of fleet drivers	[icon]
Fleet		
CANBUS RUI	CAN Bus report	[icon]
Consumption RUI	Fuel usage of fleet	[icon]
Visit RUI	Visits	[icon]
Vehicle Usage RUI	Vehicle usage of fleet drivers	[icon]

In the Report Manager, clicking the button in the Navigation column will take you to a specific Report interface by opening a new tab in the browser automatically. Below is the home screen of the Route report.

The interface of a report can be divided into 3 parts:

- Top – parameter bar
- Bottom left – report table
- Bottom right – Map and Diagram (not available in all reports)





WebEye

A Eurowag Company

QUERY A REPORT, USAGE OF
THE PARAMETER BAR



QUERY A REPORT, USAGE OF THE PARAMETER BAR

The parameterizing options for different reports may vary. The parameter bar is single-level, so there is no separate pop-up window or hidden function in which you can find new settings, but all the options for the given report are immediately visible at the top of the screen.

i In case where the reports can be queried only for a driver, it will not be possible to choose a license plate. For reports where only a vehicle can be queried, no driver can be selected.

The screenshot displays the 'WebEye Visit RUI' interface for configuring a 'Visit - Scheduled report'. The top navigation bar includes a home icon, the 'WebEye Visit RUI' title, and a user profile icon. Below this is a 'Parameter bar' with various filters: 'Vehicle group filter', 'Period' (10/01/2022 00:00 to 11/01/2022 23:59), '3 minute' duration, 'and/or' logic, 'Ignition off' status, 'User point' location, 'POI name', 'Initial mileage reading', 'CAN km' and 'GPS km' units, and 'Distance correction factor'. The main configuration area is divided into three tabs: 'General', 'Scheduling', and 'Delivery address'. The 'General' tab is active, showing fields for 'Name of the report' (Other test report), 'Language of report' (HU), 'Status' (Finished), and 'Special settings' (3 minute, and/or, Ignition off, User point, POI name, Initial mileage reading, CAN km, GPS km, Distance correction factor). The 'Scheduling' tab shows 'Frequency' (Daily). The 'Delivery address' tab shows 'E-mail addresses (separate by enter)'. A map on the right side shows the location of Saint Petersburg. At the bottom right, there are 'Edit', 'Delete', and 'Close' buttons.

FUNCTIONS OF THE PARAMETER BAR

Save table settings into the user's profile

Using this function you can save e.g. the order of the columns in that report, and which columns are hidden.

Restore the table to its default setting

Using this function, the hidden columns are visible again and their order is the default.

Vehicle group filter drop-down list

In the report you can narrow down to a vehicle group; for this, select a vehicle group from the drop-down menu.

Filter by POI group

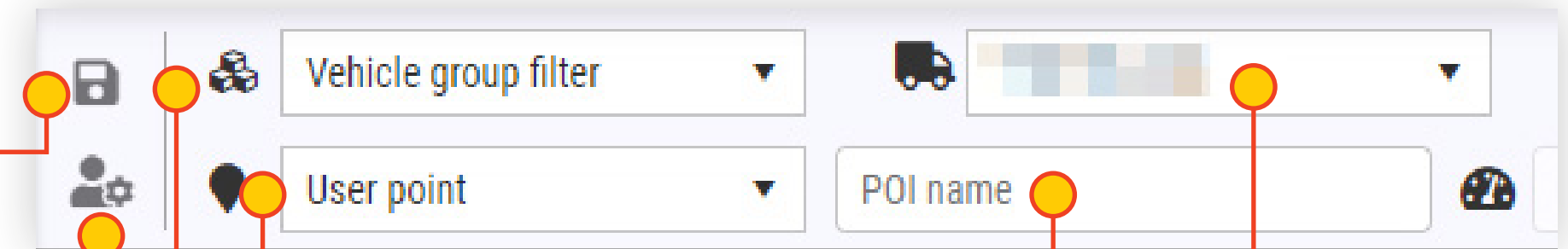
Narrows the items to be displayed in the report.

Point of Interest (POI) Filter

This is used to narrow down the items to be displayed in the report.

Vehicle Selector drop-down menu

It only includes vehicles that are assigned to the user and the subscription of which includes that particular report. It is important that if the Vehicle Group filter is used, it also affects the vehicles available in this drop-down.



FUNCTIONS OF THE PARAMETER BAR

Report Query Interval Shortcut

Instead of entering a start and end date, you can select a period from the list, such as today, yesterday, last 7 days, January, February, and more.

Starting mileage state input field

In the report, if you want to display GPS-based km data, you can enter the initial km state of the query interval in this field.

CAN km or GPS based km display selector

By selecting CAN km, the report is displayed according to the vehicle's on-board km positions. Selecting GPS km displays GPS-based distance.

Home country drop-down menu

In reports where domestic / foreign activities can be distinguished, the code of the home country can be set in this drop-down menu (e.g. H - Hungary, RO - Romania, PL - Poland, etc.)

Period

08/02/2022 00:00

Initial mileage reading

CAN km GPS km

22:23:59

2 minute

and or

H

GPS RAW POI

FUNCTIONS OF THE PARAMETER BAR

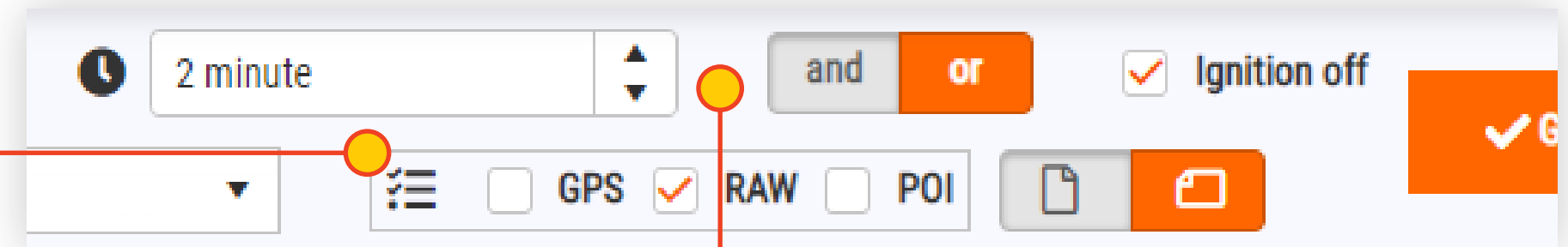
Additional settings for report content

User can adjust the details of the data displayed in the report.

- When “GPS” parameter is selected, the WGS84 coordinate pairs for each geographical position is also displayed in the report list.
- When selecting the „RAW” parameter, some data is „raw” or will be displayed without rounding, e.g. km or fuel data contains more decimal places, and the day grouping lines will not be displayed.
- By selecting the „POI” parameter, departures and stops (positions) within a POI are also listed in the Route type reports.

Start, stop sensitivity and trigger settings

The set values determine how the vehicle’s start and stop events are displayed. The first parameter means how long stopping with the ignition on should count as a stop, and selecting Ignition off means the ignition is turned off. Default settings: 3 minutes, „or”, Ignition off checked.



The screenshot shows a user interface for configuring report parameters. A red line with three yellow circular markers connects the text in the 'Additional settings for report content' section to specific controls in the parameter bar. The first marker points to a dropdown menu. The second marker points to a list icon. The third marker points to the 'RAW' parameter option. The parameter bar includes a time selector set to '2 minute', logical operators 'and' and 'or' (with 'or' selected), a checked 'Ignition off' checkbox, and data format options 'GPS' (unchecked), 'RAW' (checked), and 'POI' (unchecked). There are also icons for file operations and a large orange confirmation button on the right.



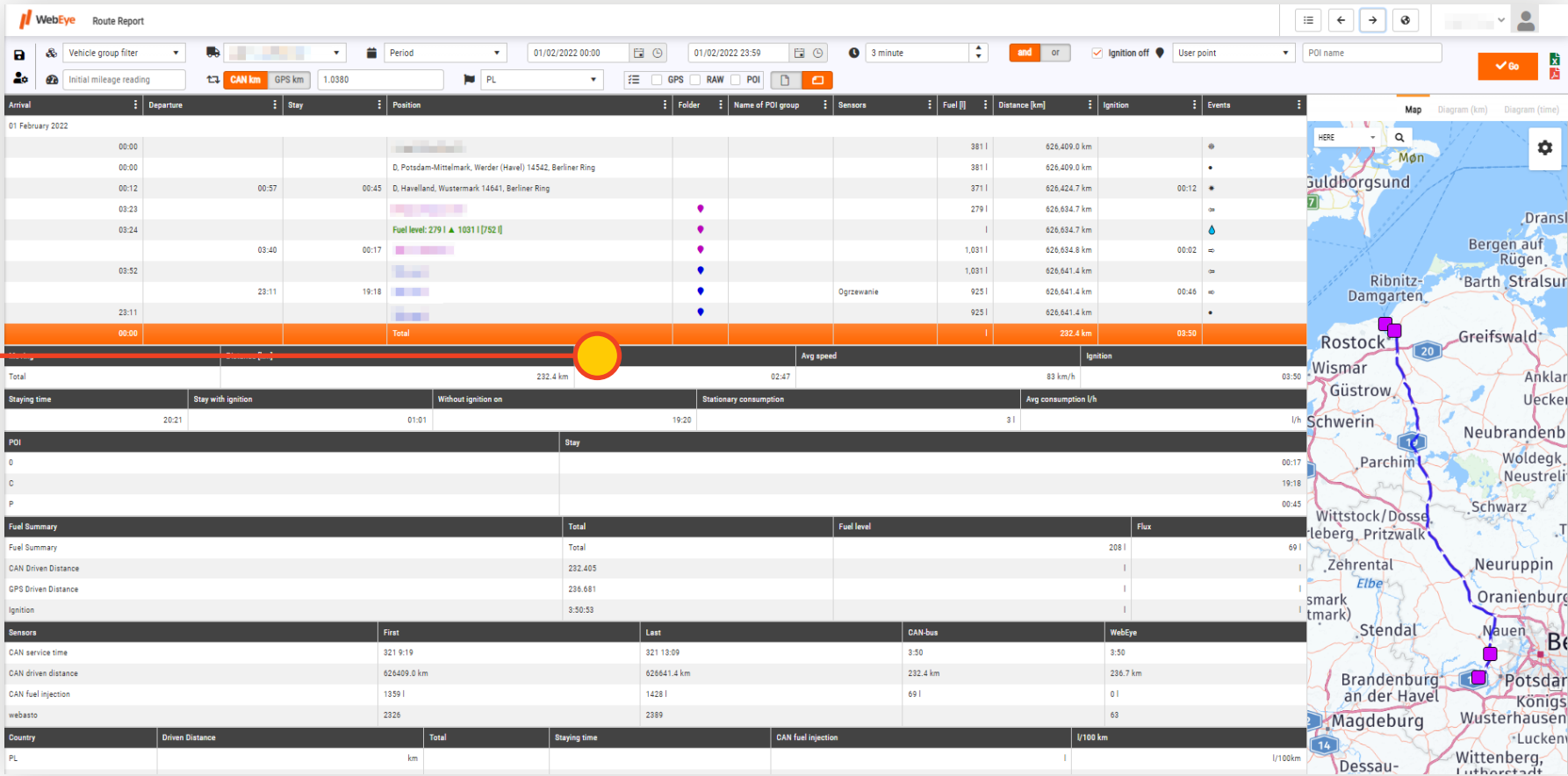
WebEye
A Eurowag Company

THE VIEW OF REPORT RESULTS



THE VIEW OF REPORT RESULTS

After querying the report, its contents are displayed on the interface. Use the scroll bar on the right side of the table to move the report content up and down. The periodic summary table(s) appear at the bottom of the report content.





WebEye
A Eurowag Company

CUSTOMIZATION OF REPORT TABLE



CUSTOMIZATION OF REPORT TABLE

The layout of the columns in the table can be customized. The order of the columns can be rearranged and columns can be turned on and off. To change the order, click on the header of the table and drag the column to the position you want. To remove a particular column, click on “Column Menu” in the column header (3 vertical dots icon) and select “Columns”. Custom layouts can be saved to the user profile with the icon in the parameter bar. 📁

You can filter or sort the content in the columns (Filter, Ascending or Descending).

i Rearranging, filtering, or sorting columns is possible only in the main (first) table. In reports that include multiple tables, this feature is not available in the second or any following tables.

Arrival	Departure	Stay	Position
08 February			
00:			
00:			
	07:16		
07:29	09:01		
12:23			
13:06	13:52		
16:24			



117.20%	165.70%	13.70%
7.40%	70.10%	-4.70%
-18.00%	-95.30%	-58.70%
-68.60%	-42.00%	-48.80%
-60.10%	167.00%	-104.20%
-73.80%	196.10%	20.30%
23.00%	-1.30%	-115.00%
85.40%	-63.00%	100.00%
177.60%	-116.50%	15.00%
155.80%	-199.20%	29.70%
26.30%		

EXPORT OF THE REPORT CONTENT

A queried report can be saved in Excel or PDF format. For Excel, the entire contents of the UI are saved. For PDFs, only columns (from left to right on the UI) and their contents are saved up to A4 page size (portrait or landscape view). For multi-tabular reports, the spreadsheets are exported on separate pages.





A Eurowag Company

www.webeye.eu